



# Installing MacBook Pro 15" Retina Display Mid 2012 Left Fan

Written By: Jake Devincenzi

## TOOLS:

- [MacBook Pro and Air 5-Point Pentalobe Screwdriver \(1\)](#)
- [Plastic Opening Tools \(1\)](#)
- [Spudger \(1\)](#)
- [T5 Torx Screwdriver \(1\)](#)

## PARTS:

- [MacBook Pro 15" Retina Left Fan \(1\)](#)

## SUMMARY

Use this guide to install a new left fan (left when the device is resting with the logic board side closest to you.)

## Step 1 — Lower Case



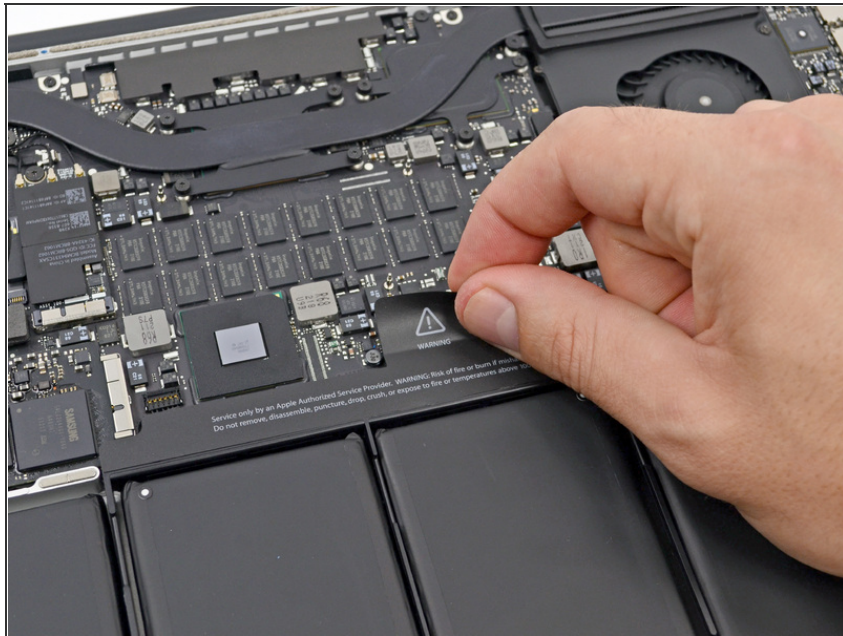
- Remove the following pentalobe screws securing the lower case to the MacBook Pro with Retina display.
  - Eight 3.0 mm
  - Two 2.3 mm

## Step 2



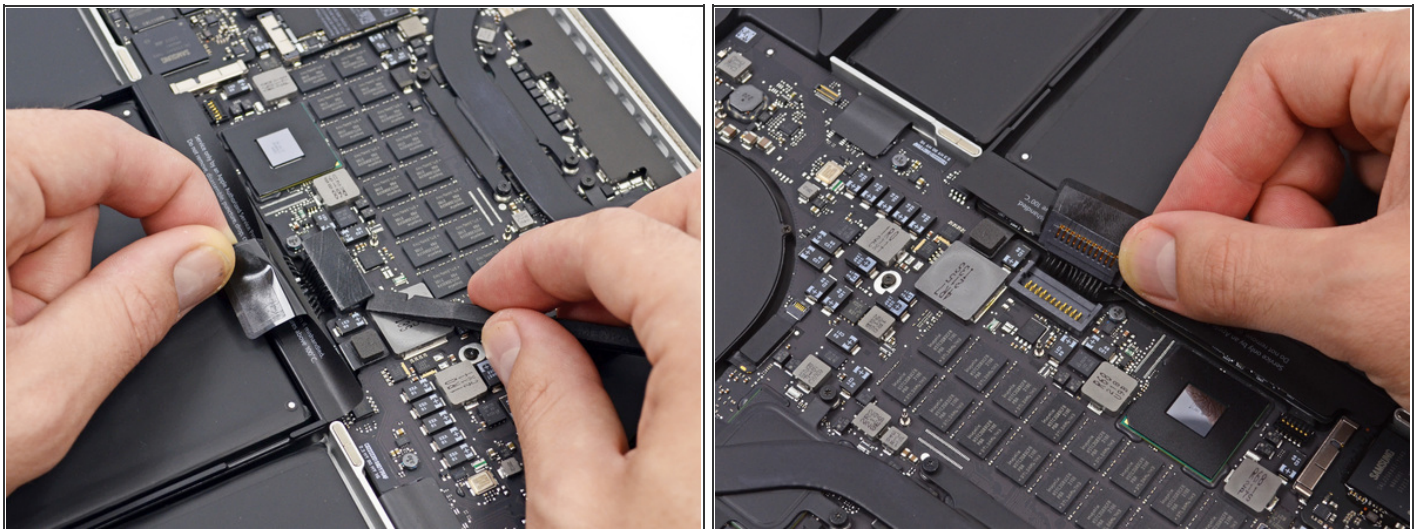
- Lifting from the edge nearest the clutch cover, lift the lower case off the MacBook Pro.
- Set the lower case aside.

### Step 3 — Battery Connector



- Peel back the warning label covering the battery connector.

### Step 4



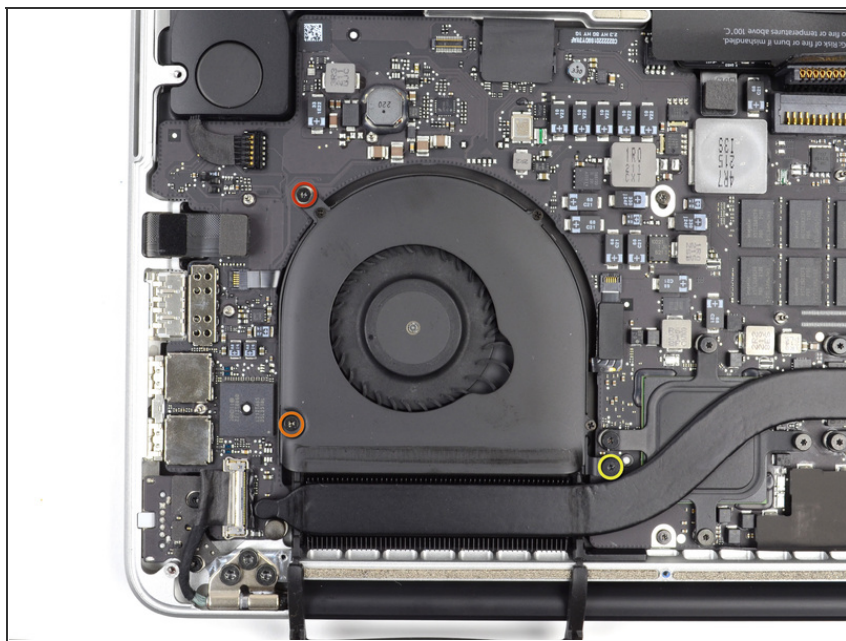
- Using the flat end of a spudger, gently pry the battery connector straight up out of its socket on the logic board.
- Bend the battery cables back and out of the way, ensuring that the battery connector doesn't accidentally make contact with the logic board.

## Step 5 — Left Fan



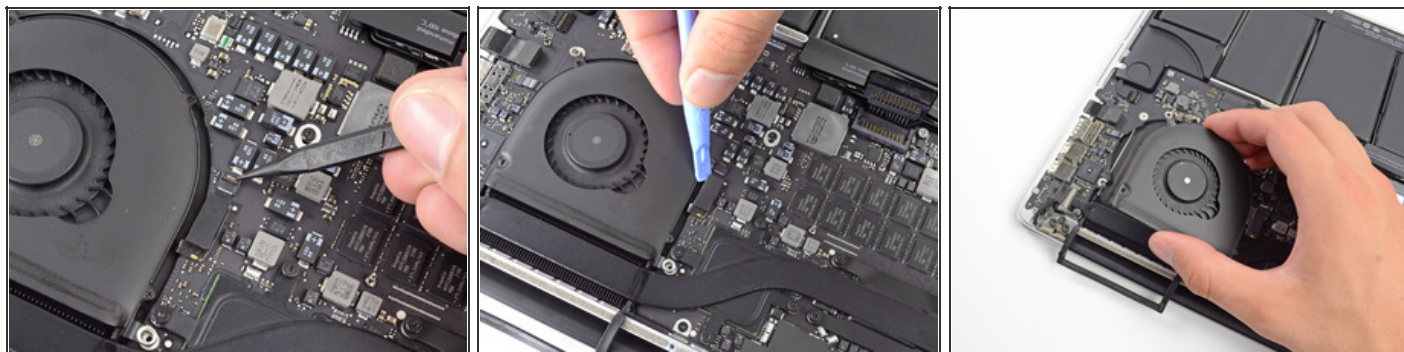
- Use the flat end of a spudger to lift the rubber heat sink cover up off the left fan.



## Step 6



- Remove the following three screws securing the left fan to the logic board:
  - One 3.9 mm T5 Wide Head Torx screw
  - One 4.4 mm T5 Torx screw
  - One 5.0 mm T5 Torx screw

## Step 7



- Use the tip of a spudger to flip up the retaining flap on the left fan ribbon cable ZIF socket.
- Be sure you are prying up on the hinged retaining flap, **not** the socket itself. 
- Starting at the top of the cable, slide a plastic opening tool under the left fan cable to free it from the logic board.
  - Use caution when freeing the cable, as it is strongly adhered to the logic board. 
- Lift the left fan out of the device.

To reassemble your device, follow these instructions in reverse order.

This document was last generated on 2012-11-01 08:55:48 AM.